

# GEDIFRA

VIVALDI



Size  
Extra

Mehr unter [www.gedifra.com](http://www.gedifra.com)

# AMALIA JACKET WITH CABLES

Sizes Small to Large (X-Large to XX-Large)



## MATERIALS:

Gedifra **Vivaldi** (100% Cotton, each ball 120 m/50 g):  
600 (750) g in Black Col. #3104  
Circular needle size US 6 (4mm).  
Cable needle (cn). 5 transparent buttons size 44.

## RIB PATTERN (odd number of sts):

**Row 1 (RS):** 1 selvage st, \*k1, p1; rep from \*, end with k1, 1 selvage st.

**Row 2 (WS):** k the knit sts and p the purl sts.

**NOTE:** For an even number of sts, omit the last k1.

## CABLE-LACE PATTERN (multiple of 12 sts + 4 + 2 selvage sts):

Foll the Chart. Only the RS rows are shown. On the WS rows, k the knit sts and p the purl sts, and p the yo's. Beg with 1 selvage st, work rep across the row, end with the sts after the rep and 1 selvage st. Rep rows 1 – 20. When working increases and decreases into the pattern, make sure there is always an inc to compensate for a dec and vice versa, otherwise work sts as knit or purl.

## FULL-FASHIONED DECREASE:

At end of row: Work in to last 3 sts, SKP (slip 1, k1, pass slip st over k1), 1 selvage st.

At beg of row: 1 selvage st, k2tog.

## GAUGE:

20 sts and 28 rows = 4 x 4"/10 x 10 cm.

## BACK:

Cast on 101 (121) sts and work in Rib pat for 1½"/4cm, and inc 13 (17) sts evenly across last WS row = 114 (138) sts. Work in Ca-

ble-Lace pat until piece measures 26 (27)"/66.5 (69) cm above rib. Bind off all sts. The center 32 (36) sts are for the back neck, the outer 41 (51) sts each side for the shoulders.

## LEFT FRONT:

Cast on 49 (59) sts and work in Rib pat for 1½"/4cm, and inc 5 (7) sts evenly across last WS row = 54 (66) sts. Work in Cable-Lace pat until piece measures 14 (14½)"/35.5 (37)cm above rib. For the neck shaping, work full-fashioned dec 1 st at neck edge (end of RS rows) every 6th row 13 times (every 4th row 2 times and every 6th row 13 times). When same length as back, bind off rem 41 (51) sts for shoulder.

## RIGHT FRONT:

Work to correspond to Left Front, reversing neck shaping (working dec at beg of RS rows).

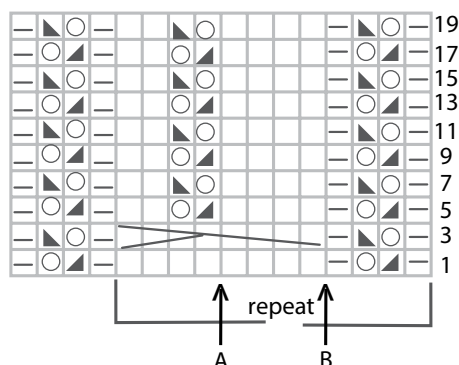
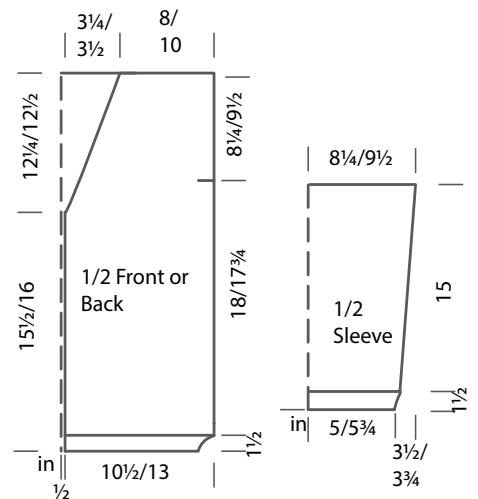
## SLEEVE:

Cast on 46 (52) sts and work in Rib pat for 1½"/4cm, and inc 4 (6) sts evenly across last WS row = 50 (58) sts. Work in Cable-Lace pat, beg with 1 selvage st and the sts before arrow A (B), work the rep 3 (4) times, end with the sts up to arrow A and 1 selvage st (end with 1 selvage st). At the same time, for the sleeve shaping inc 1 st each side (working inc sts into pat) every 6th row 17 times (every 6th row 12 times and every 4th row 7 times) = 84 (96) sts. Work even until piece measures 15"/38.5 cm above rib. Bind off all sts.

## FINISHING:

Block pieces to measurements.

Sew shoulder seams. For the outer border, with RS facing, beg at lower right front edge, pick up and k 64 (68) sts along right front edge to neck, 48 (50) sts along neck edge, 33 (37) along back neck, 48 (50) sts along left front neck and 64 (68) sts along straight left front edge = 257 (273) sts. Work in rib pat, beg next WS row with 1 selvage st and p1. When the border measures ½"/1.5cm, along right front work 5 buttonholes as foll: bind off 4 sts and on the foll row cast on 4 sts. Place the first one at 4 sts from lower edge and the other 4 spaced 10 (11) sts apart. When border measures 1¼"/3cm, bind off all sts in rib. Set in sleeves, sew side and sleeve seams. Sew on buttons.



- = P1
- = K1
- = Yo
- = k2 tog
- = SKP (slip 1 st knitwise, k1, pass slip st over k1)
- = 8-ct LC: Slip 4 sts to cn and hold to front, k4, k4 from cn