

# GEDIFRA

MONNALISA



**G0334** Fair Isle Jumper

# G0334/ FAIR ISLE JUMPER

EU dress size 38/40, US size 10/12



Skill Level

## MATERIALS

Gedifra **Monnalisa**

(70% alpaca, 30% polyamide; 150 m/50 g): 200 g in color 00701 and 50 g each in color 00703 and 00716.

One size 6mm (UK 4/US 10) circular needle, 60cm/24in long;  
one size 6mm (UK 4/US 10) circular needle, 80cm/32in long;  
one set size 6mm (UK 4/US 10) double-pointed needles;  
stitch markers

## ABBREVIATIONS

beg = begin(ning)  
cont = continue  
dec = decreas(e)(ing)  
inc = increas(e)(ing)  
k = knit  
meas = measures  
patt = pattern  
p = purl  
RS = right side  
st(s) = stitch(es)  
WS = wrong side  
ywfd = yarn forward

## STOCKING STITCH

K on RS, p on WS; k every rnd.

## RIB PATTERN

K2, p2.

## FAIR ISLE PATTERN

Work according to chart. Work the 16-st patt rep throughout. Very loosely carry strand not in use across WS of work.

## MAIN PATTERN

Work 15 rnds each in Fair Isle patt and st st in col 00701 alternately throughout.

## SHORT-ROW SHAPING FOR BACK NECK

Place beg of rnd marker at center back.

**Next row (RS):** K to 7 sts after marker, turn.

**Next row (WS):** Ywfd, p14, turn.

**Next row (RS):** Ywfd, k21, turn.

**Next row (WS):** Ywfd, p28, turn.

**Next row (RS):** Ywfd, k35, turn.

**Next row (WS):** Ywfd, p42, turn.

**Next row (RS):** Ywfd, k to center back.

## TENSION

16 sts and 21 rows/rnds to 10cm/4in measured over st st with size 6mm needles or size needed to achieve tension.

PLEASE CHECK YOUR TENSION AS IT IS ESSENTIAL TO ACHIEVE THIS TENSION IN ORDER TO ACHIEVE SUCCESS.

## YOKE

Jumper is worked from the top down. Using shorter circular needle and col 00701, cast on 80 sts.

Place beg of rnd marker and join for working in rnds. Beg of rnd is at center back.

Work rib patt in rnds until piece meas 3cm/1.25in from cast-on.

**Next rnd:** Knit, decreasing 3 sts evenly around. 77 sts.

Work short-row shaping for back neck. **Next rnd:** Knit, increasing 3 sts evenly around. 80 sts.

Work rnds 1 - 15 of Fair Isle chart. Cont with col 00701 only.

\*\* **Next rnd:** Knit.

**Next rnd:** Knit, increasing 20 sts evenly around. 100 sts. \*\*

Rep from \*\* to \*\* 5 times more. 200 sts.

**Next rnd:** Knit.

**Next rnd:** Knit, increasing 24 sts evenly around. 224 sts.

Change to longer circular needle as st count increases.

**Next rnd:** K36, k40 and place on holder for left sleeve, k72, k40 and place on holder for right sleeve, k36.

Work rnds 1 - 15 of Fair Isle chart.

Cont with col 00701 only.

**Next 15 rnds:** Knit.

Work rnds 1 - 15 of Fair Isle chart.

Cont with col 00701 only.

Work in st st until piece meas 41cm/16.25in from divide.

Work in rib patt for 5cm/2in.

Loosely cast off all sts in rib.

## SLEEVES

Using double-pointed needles and col 00701, k40 from left sleeve holder.

Place beg of rnd marker and join for working in rnds.

**Next rnd:** Knit.

**Next rnd:** Knit, increasing 4 sts evenly around. 44 sts.

**Next rnd:** Knit.

**Next rnd:** Knit, increasing 4 sts evenly around. 48 sts.

Work in main patt for 36cm/14.25in, decreasing 10 sts evenly around on last rnd. 38 sts.

Work in rib patt for 5cm/2in.

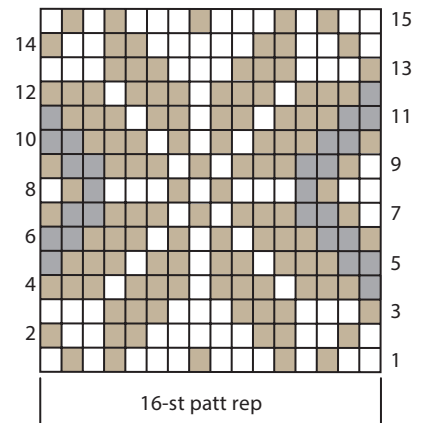
Loosely cast off all sts in rib.

Rep for right sleeve.

## FINISHING

Carefully weave in all ends.

Sew underarms.



□ = col 00701  
■ = col 00703  
■ = col 00716

