

GEDIFRA

FIOR DI SETA

Mehr unter www.gedifra.com

CHLOÉ TRIANGLE SCARF

Size approx 23½ x 71"/60 x 180 cm



Schwierigkeitsgrad

MATERIALS:

Gedifra **Fior di Seta** (100% recycled Silk, each ball 165 m/50 g):
200 g each in Black Col. #1263 and White Col. #1250
Circular needle size US 6 (4mm), 40"/100cm long.

GARTER STITCH

Knit every row.

SELVAGE STITCHES:

At beg of rows work the selvage st as k1tbl, at the end of rows work the selvage st as slip 1 st purlwise wyif.

FULL-FASHIONED DECREASE:

At right-hand edge: 1 selvage st, k2, k2tog.
At left-hand edge: Work to last 5 sts, then SKP (slip 1, k1, pass slip st over k1), k2, 1 selvage st.

SLIP STITCH PATTERN

Foll the chart. All rows are shown. Work the 12-st rep across and rep rows 1 – 24.

GAUGE:

26 sts and 42 rows in Slip St Pat = 4 x 4"/10 x 10 cm.

INSTRUCTIONS:

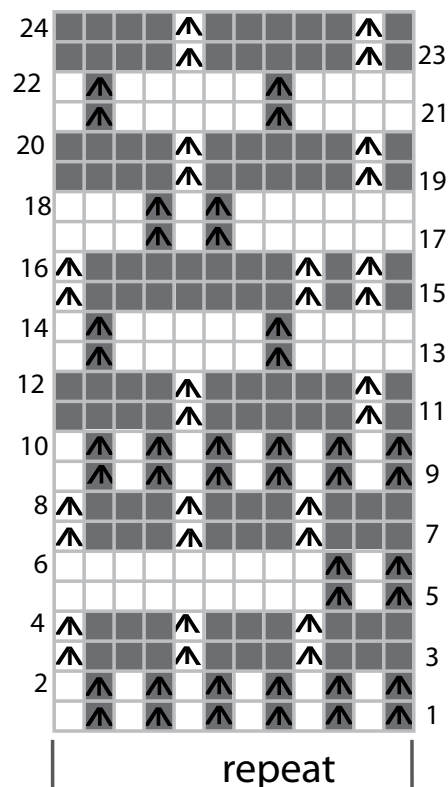
With Black cast on 486 sts and work in garter st for 4 rows, then with White work in garter st for 2 rows.

Work in Slip St Pat as foll: 1 selvage st, 2 sts garter st. 480 sts in Slip St Pat, 2 sts garter st, 1 selvage st. After 12 rows have been worked in Slip St Pat, work Full-Fashioned dec each side alternately every 2nd and 4th rows, working dec sts into Slip St Pat. When piece measures approx 23½"/60cm from beg, bind off rem sts.

TIP: If you want a longer shawl, work the decreases always every 4th row.

FINISHING:

Weave in ends. Block shawl to measurements.



- = K1 in Black
- = K1 in White
- ▲ = on RS rows: slip 1 st with yarn in back, on WS rows: slip 1 st with yarn in front