

GEDIFRA

MONNALISA



G0188 / PONCHO

EU dress size 36/38, 40/42, 44/46.
See size diagram for more details.



GARTER STITCH (G st)
K every row.

RIDGE PATTERN
2 rows st st, 2 rows g st.

TENSION
16 sts and 17 rows to 10cm/4in measured over chevron lace on 6mm needles or size needed to achieve tension.
16.5 sts and 17 rows to 10cm/4in measured over ridge patt 6mm needles or size needed to achieve tension.

PLEASE CHECK YOUR TENSION AS IT IS ESSENTIAL TO ACHIEVE THIS TENSION IN ORDER TO ACHIEVE SUCCESS.

INSTRUCTION (Poncho is worked in one piece, arrow on schematic shows direction of work).
Cast on 86 sts.

Next row (RS): * K2, p1; rep from * to last 2 sts, k2.

Next row (WS): * P2, k1; rep from * to last 2 sts, p2.

Rep last 2 rows until piece meas 3cm

from cast-on, ending with RS facing for next row.

Next row (RS): Work as set on row 1 of chevron lace chart working 42 sts rep twice.

Next row: Purl all sts and yos to end. These 2 rows set chart placement.

Work as set on chart until piece meas 76.5/72.5/68.5cm from cast-on edge.

Cast on 6 sts at beg of next 2 rows. 98 sts.

Work newly cast-on sts in ridge patt and rem sts in chevron lace as established until piece meas 80.5/82.5/84.5cm from cast-on edge, ending with RS facing for next row.

Divide for neck

First side

Next row (RS): Work 49 sts and turn,

Chart key:

- ⊕ = k1
- = k1
- ⊗ = yfwd (yarn forward)
- ⊠ = p2tog

MATERIALS

Gedifra **Monnalisa**
(70% alpaca, 30% polyamide;
150m/50 g): 250/300/350g in Light Grey
Colour 00703

One pair 6mm (UK 4/US 10) needles

ABBREVIATIONS

beg = beginning
cont = continue
g st = garter stitch
k = knit
meas = measures
patt = pattern
p = purl
rem = remaining
rep = repeat
RS = right side
st(s) = stitch(es)
tog = together
WS = wrong side
yo = yarn over

CHEVRON LACE

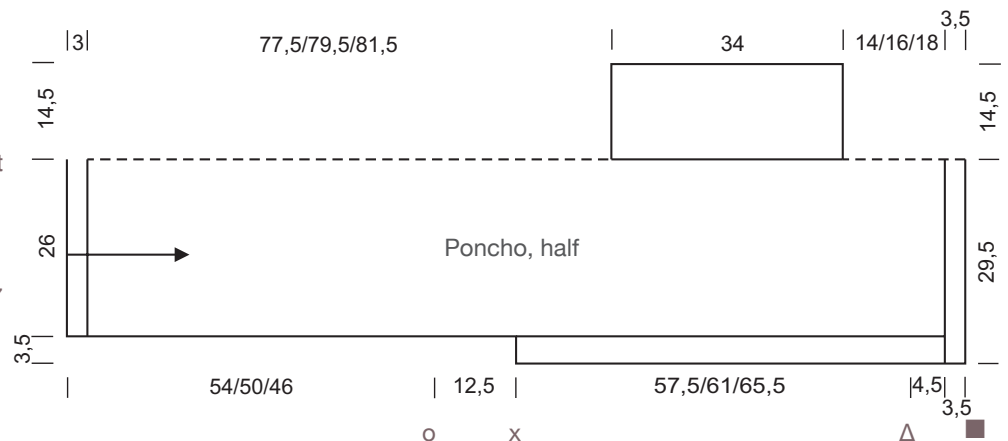
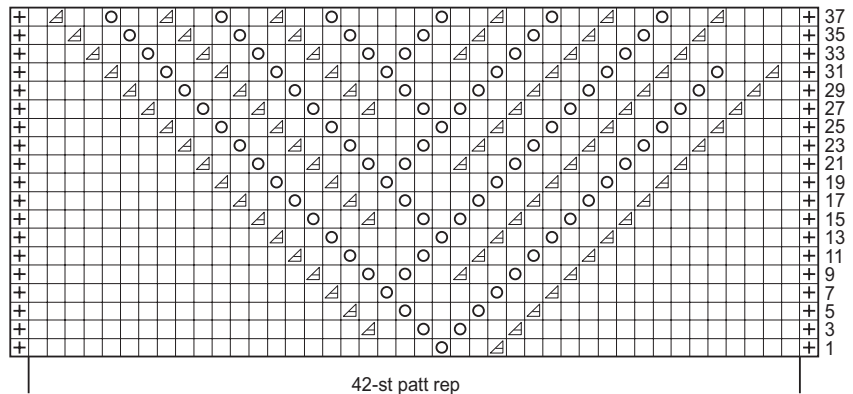
Work back and forth in rows according to chart. Numbers at right edge of chart indicate RS rows. Read RS rows from right to left. On all WS rows, p all sts and yos. Beg with st before patt rep, work the 42 st patt rep between arrows twice, ending with st after patt rep.

Work rows 1 – 38 once, then rep rows 27 – 38 throughout.

STOCKING STITCH

RS rows - K, WS rows - P.

CHART



leaving rem sts on a holder.

Work each side of neck separately.

Next row (WS): Cast on 24 sts at beg of row for collar, patt to end. 73 sts.

Working newly cast-on sts in ridge patt and rem sts in chevron lace as established, cont until neck meas 34cm from divide point, ending with **WS** facing for next row.

Next row (WS): Cast off 24 sts at beg of row, work in chevron lace to end.

Slip rem 49 sts to a holder.

Second side

Cast on 24 sts, with RS facing patt across 49 sts from first holder. 73 sts.

Working newly cast-on sts in ridge patt and rem sts in chevron lace as established, cont until neck meas 34cm from divide point, ending with RS facing for next row.

Next row (RS): Cast off 24 sts at beg of row, work in chevron lace to end. 49 sts.

Next row (WS): Patt 49 then patt 49 from

second holder. 98 sts.

Work as set for 14/16/18cm.

Work in rib patt as set for 3.5cm, ending with RS facing for next row.

Cast off all sts in rib.

FINISHING

Pin piece to measurements and block.

Sew collar seams.

Sew seams between o and x and \triangle and \square .