

# GEDIFRA

CUOR DI MERINO 120

**G0159**

Jumper in textured pattern  
with mock centre cable

# G0159 / JUMPER IN TEXTURED PATTERN WITH MOCK CENTRE CABLE



Skill Level

EU dress size 36/38, 40/42, 44/46. See size diagram for more details.



p2tog tbl = slip 1 st as if to purl, slip 1 st as if to knit; slip both sts back to left needle and p2tog through back of loops.

rem = remaining

rep = repeat

rnd(s) = round(s)

RS = right side

skp = slip 1 st as if to knit, k1, pass slipped st over knitted st.

st(s) = stitch(es)

tog = together

WS = wrong side

## TEXTURED PATTERN IN ROWS

Worked back and forth in rows according to chart A. Numbers at right edge of chart indicate RS rows, numbers at left edge of chart indicate WS rows. Read RS rows from right to left, read WS rows from left to right.

Beg with st before patt rep, work 4 sts between arrows for patt rep, end with sts after patt rep.

Rep rows 1 – 4 throughout.

## TEXTURED PATTERN IN RND S

Worked in rnds according to chart B.

Numbers at right edge of chart indicate rnds. Work all rnds from right to left. Work the 4-st patt rep around.

Rep rnds 1 – 4 throughout.

## 24-STITCH MOCK CABLE IN ROWS

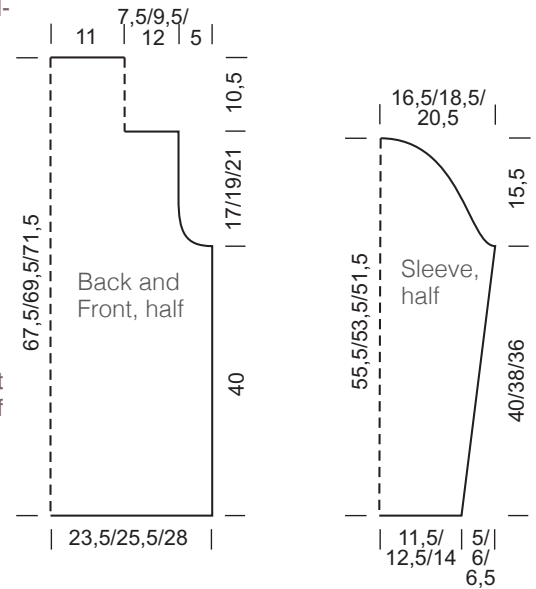
Worked back and forth in rows according to chart C. Numbers at right edge of chart indicate RS rows, numbers at left edge of chart indicate WS rows. Read RS rows from right to left, read WS rows from left to right.

Rep rows 1 – 14 throughout.

## 24-STITCH MOCK CABLE IN RND S

Worked in rnds according to chart D.

Numbers at right edge of chart indicate rnds. Work all rnds from right to left. Rep rnds 1 – 14 throughout.



Instructions are given for each size. When only one figure is given, it applies to all sizes.

## MATERIALS

### Gedifra Cuor di Merino 120

(97% pure wool, 3% polyamide; 120m/50 g): 400/450/500 g in Brown Colour 00103

One pair 7mm (UK 2/US 10.5) needles

One 7mm (UK 2/US 10.5) circular needle, 40cm/16in long

## ABBREVIATIONS

beg = beginning

cont = continue

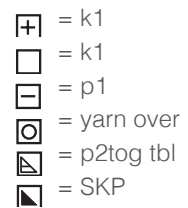
inc = increas(e)(ing)

k = knit

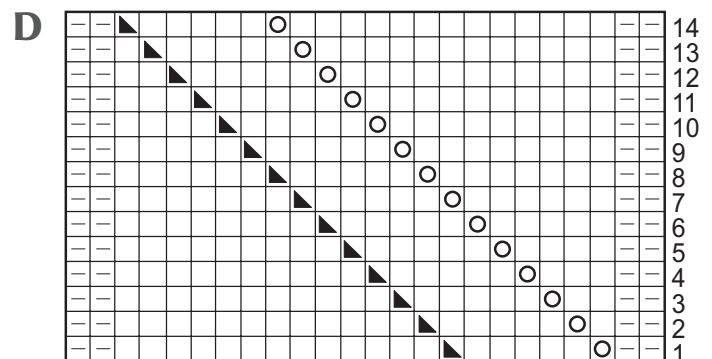
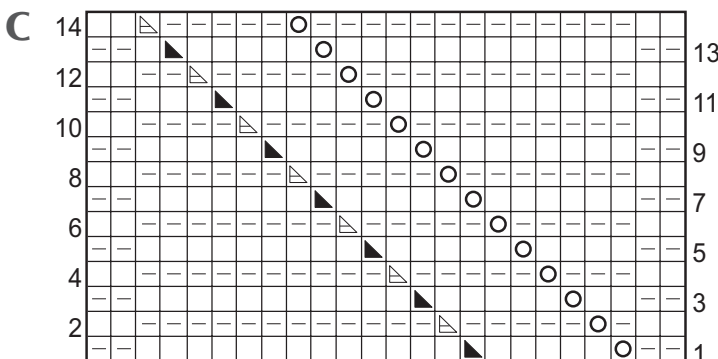
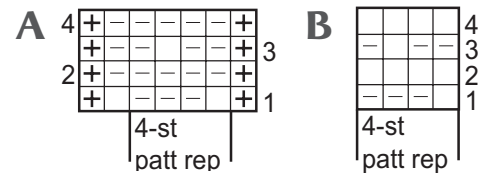
meas - measure(s)

patt = pattern

p = purl



## CHART:



## TENSION

14.5 sts and 19 rows/rnds to 10cm/4in measured over textured patt on 7mm needles or size needed to achieve tension.  
24 sts and 19 rows/rnds to 15x10cm/6x4in measured over mock cable patt on 7mm needles or size needed to achieve tension.

PLEASE CHECK YOUR TENSION AS IT IS ESSENTIAL TO ACHIEVE THIS TENSION IN ORDER TO ACHIEVE SUCCESS.

## BACK

Cast on 71/75/83 sts.

**Next row (RS):** Working from chart A, beg with st before patt rep, work 4 sts between arrows for patt rep 17/18/20 times, ending with sts after patt rep.

This row sets chart placement.

Working 4 row rep as set on chart throughout, cont until piece meas 40cm from cast-on edge, ending with RS facing for next row.

## Shape armholes

Cast off 2 sts at beg of next 2 rows.

Cast off 1 st at beg of next 4 rows.

63/67/75 sts.

\*\* Work 2 rows without shaping, cast off 1 st at beg of next 2 rows \*\*, rep from \*\* to \*\* 3 times. 57/61/69 sts.

Cont straight until armhole meas 17/19/21cm, ending with RS facing for next row.

Cast off 12/14/18 sts at beg of next 2 rows.

Leave rem 33 sts to a holder.

## FRONT

Cast on 74/82/90 sts.

**Next row (RS):** Work row 1 of chart A over first 25/29/33 sts, work row 1 of chart B over next 24 sts, beg with last 2 sts of patt rep, work row 1 of chart A over rem 25/29/33 sts.

Cont to follow charts until piece meas 40cm from cast-on edge, ending with RS facing for next row.

## Shape armholes

Cast off 2 sts at beg of next 2 rows.

Cast off 1 st at beg of next 4 rows.

66/74/82 sts.

\*\* Work 2 rows without shaping, cast off 1 st at beg of next 2 rows \*\*, rep from 3 times. 60/66/72 sts.

Cont straight until armhole meas 17/19/21cm, ending with RS facing for next row.

Cast off 12/14/18 sts at beg of next 2 rows.

Leave rem 36/38/36 sts to a holder.

## SLEEVES

Cast on 35/39/43 sts.

**Next row (WS):** Purl.

**Next row (RS):** Working from chart A, beg with st before patt rep, work 4 sts between arrows for patt rep 8/9/10 times, ending with sts after patt rep.

This row sets chart placement.

Working 4 row rep as set on chart, cont to follow chart for another 7/5/5 rows.

## Shape sleeve

**Next row (RS):** Inc 1 st at each end of row. 37/41/45 sts.

This row sets sleeve increases.

**For size 36/38 only:** Inc as set on 5 foll 10<sup>th</sup> rows, then on foll 8th row once. 49 sts.

**For size 40/42 only:** Inc as set on 5 foll 8th rows, then on 3 foll 6th rows. 57 sts.

**For size 44/46 only:** Inc as set on 9 foll 6th rows. 63 sts.

**For all sizes:** Cont straight until piece meas 40/38/36cm from cast-on edge, ending with RS facing for next row.

## Shape sleeve cap

Cast off 2 sts at beg of next 2 rows.

Cast off 1 st at beg of next 28 rows.

17/25/31 sts.

Cast off rem 17/25/31 sts.

## FINISHING

Pin pieces to measurements and block.

Sew shoulder seams.

**Collar:** Slide sts from back and front neck holders onto circular needle. 69/71/69 sts. Join for working in rnds and place marker at beg of rnd.

Cont in patt as established and foll chart B for textured patt in the rnd, then work rnd 1 of chart D for mock cable in the rnd and **at same time** k2tog last front st and first back st and k2tog last back st and first front st. 67/69/67 sts.

Cont in mock cable patt as set on chart D until collar meas 10.5cm.

Cast off all sts.